



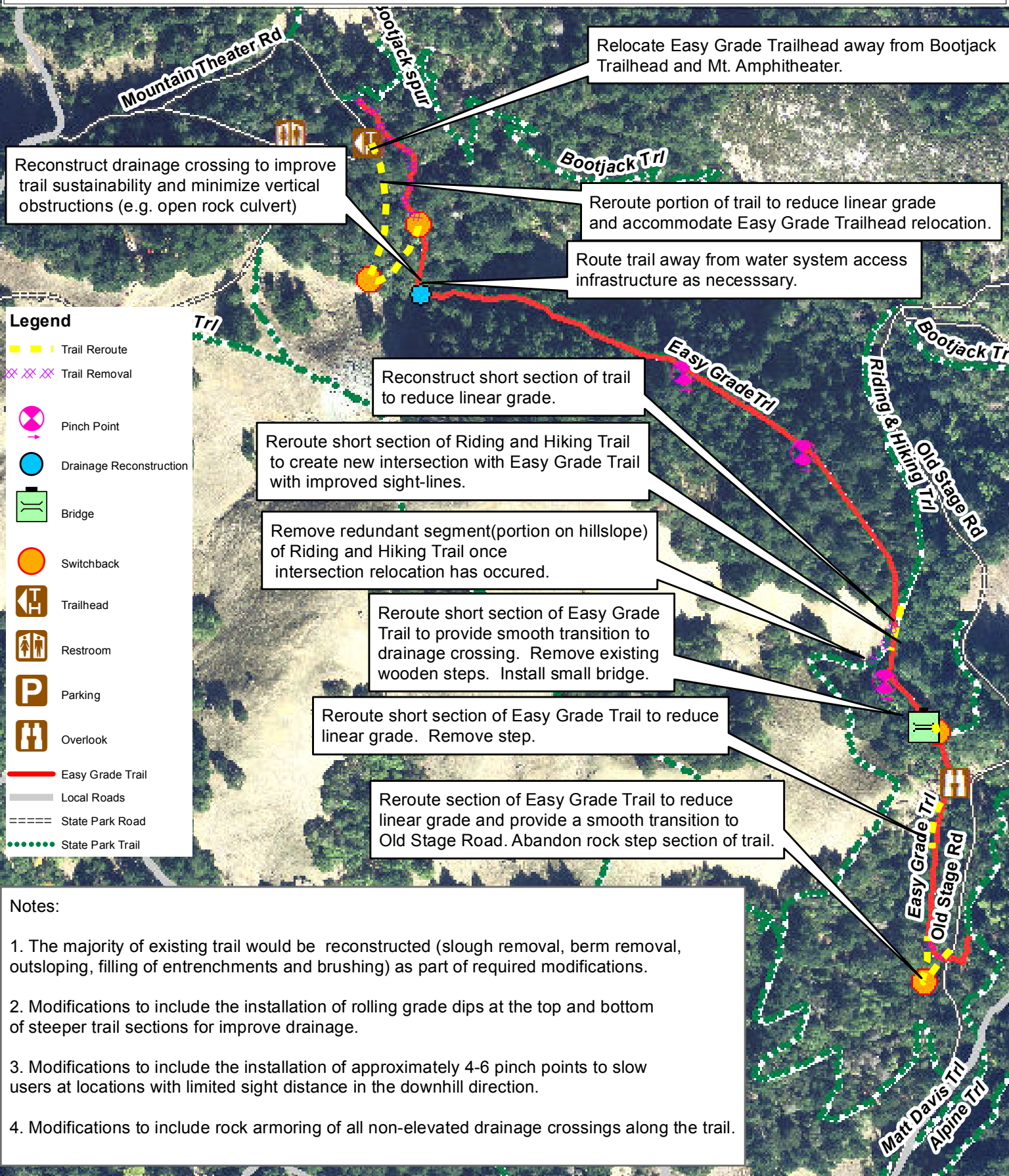
California Department of  
Parks and Recreation

# EASY GRADE TRAIL PROPOSED CHANGE-IN-USE Add bicycle use to hiking trail Mount Tamalpais State Park (Overview)

Drawn by:JS  
6/27/16



0 125 250 500 Feet





California Department of  
Parks and Recreation

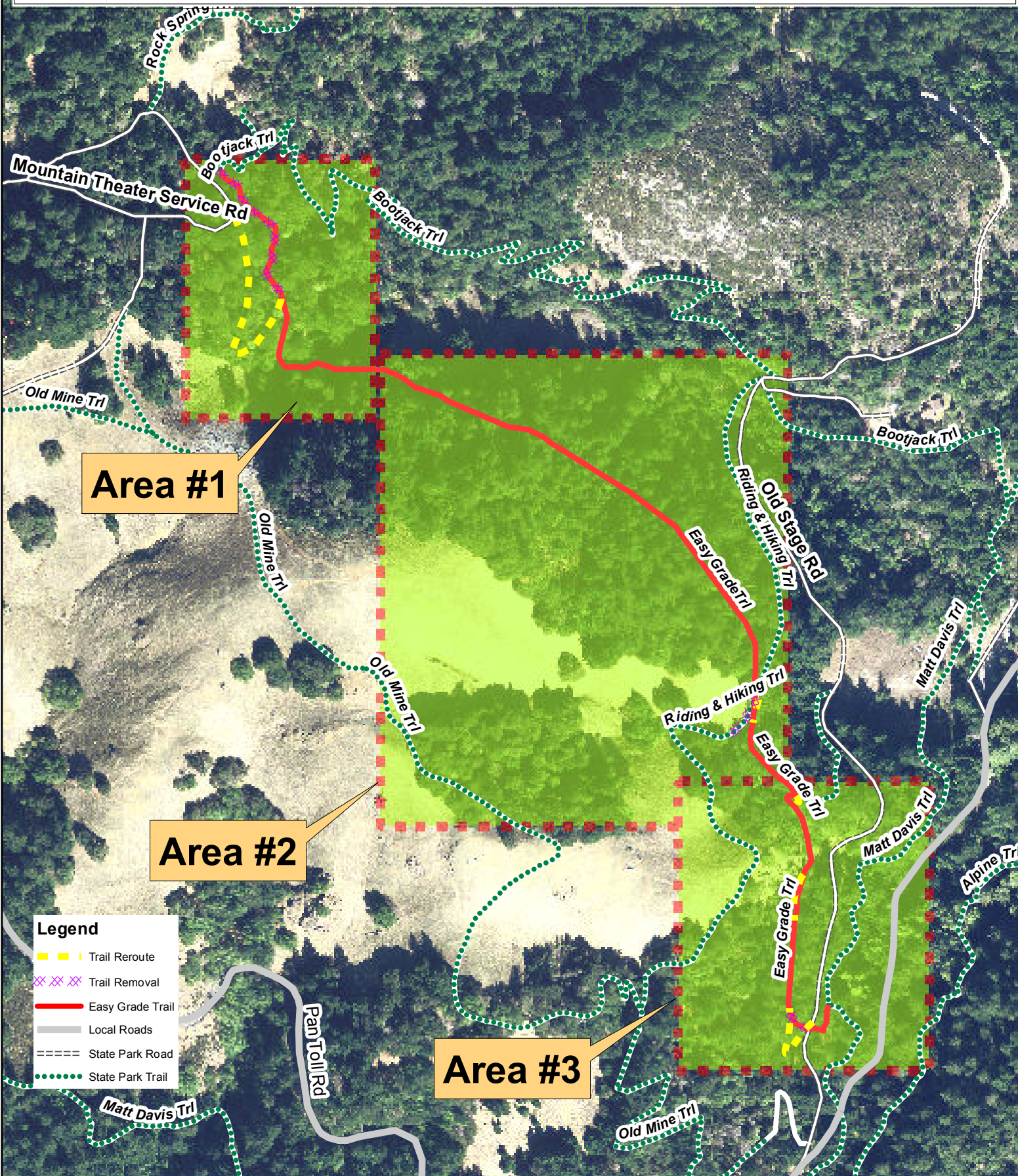
Drawn by:JS

6/27/16

# EASY GRADE TRAIL PROPOSED CHANGE-IN-USE Add bicycle use to hiking trail Mount Tamalpais State Park (Map Areas)



0 125 250 500 Feet







California Department of  
Parks and Recreation

# EASY GRADE TRAIL PROPOSED CHANGE-IN-USE Add bicycle use to hiking trail Mount Tamalpais State Park (Area #1)

Drawn by:JS

6/27/16

0 25 50 100 Feet



## Legend

- X — X — Fence
- — — Trail Reroute
- X — X — Trail Removal

## Point

### Name

- Drainage Reconstruction
- Switchback
- ⏏ Trailhead
- ✱ Information Sign
- Easy Grade Trail
- Local Roads
- State Park Road
- State Park Trail

Trailhead sign information:  
Trail courtesy (Yield)  
Speed Limit  
Stay on Trail

Rememove abandoned trail section  
and return to natural conditions

Drainage: Bridge open rock culvert with rock  
slab to create closed rock culvert. Reconstruct  
drainage crossing to rock armor trail tread and  
direct water into natural drainages.

Route trail around water utility access.

Remove abandoned water line in trail

Bootjack

Easy Grade Trl



California Department of  
Parks and Recreation

# EASY GRADE TRAIL PROPOSED CHANGE-IN-USE Add bicycle use to hiking trail Mount Tamalpais State Park (Area #2)

Drawn by:JS  
6/27/16

0 62.5 125 250 Feet



## Legend

Trail Reroute

Trail Removal

Pinch Point

Bridge

Easy Grade Trail

Local Roads

State Park Road

State Park Trail

Short reroute of Riding and Hiking trail to improve sight lines at intersection of Riding and Hiking Trail and Easy Grade Trail. Remove abandoned section of Riding and Hiking Trail and return to natural conditions.

Remove redundant portion of Riding and Hiking trail after intersection improvement reroute. Return trail to natural conditions.

Reconstruct portion of Riding and Hiking Trail to improve drainage and sustainability.

Note: Pinch points are design to slow users at location with poor sight distances in the downhill direction.



California Department of  
Parks and Recreation

# EASY GRADE TRAIL PROPOSED CHANGE-IN-USE Add bicycle use to hiking trail Mount Tamalpais State Park (Area #3)

Drawn by:JS  
6/27/16

0 37.5 75 150 Feet



Install bridge at current drainage crossing to reduce current and potential future impacts to drainage.

Sign information:  
No bikes on Easy Grade Spur.

Reroute short section of trail to provide smoother transition into and through drainage. Remove existing steps and rehabilitate to natural conditions.

Sign information:  
Trail courtesy (Yield)  
Narrow Trail  
Slow down

Construct approximately 10'X5' pullout at overlook location.

Reroute section of trail to provide smoother transition into and out of rock outcrop area. Remove existing step. Rehabilitate abandoned trail section to natural conditions.

Trailhead sign information:  
Trail courtesy (Yield)  
Speed Limit  
Stay on Trail

Reroute section of trail to provide smoother transition to Old Stage Road. Cover existing rock steps and rehabilitate abandoned trail section to natural conditions.

End of project.

## Legend

— X — Fence

— Trail Reroute

— Trail Removal

## Point

### Name

Pinch Point

Bridge

Switchback

Overlook

Information Sign

Easy Grade Trail

Local Roads

State Park Road

State Park Trail

