

Tamalpais Drive Interchange Project

Caltrans Objectives

("Project Purpose and Need," as defined by Caltrans)

Objective

Alternative

Replace non-ADA compliant facilities

2A 2B 3A 3B 4A 4B

Address seismic deficiencies

2A 2B 3A 3B 4A 4B

Green = Meets objective

Red = Doesn't meet objective

Tamalpais Drive Interchange Project

Other Objectives

(Safety, Bus Access, and Multi-Modal Improvements not included in Caltrans "Purpose and Need" Definition)

Objective

Alternative

Provide separated bicycle facility across Highway 101

2A 2B 3A 3B 4A 4B

Relocation of bus stops

NB bus stop

2A 2B 3A 3B 4A 4B

SB bus stop

2A 2B 3A 3B 4A 4B

Eliminate free right turns at freeway onramps

WB Tamalpais to NB 101

2A 2B 3A 3B 4A 4B

WB Tamalpais to SB 101 (loop onramp)

2A 2B 3A 3B 4A 4B

EB Tamalpais to SB 101

2A 2B 3A 3B 4A 4B

EB Tamalpais to NB 101 (loop onramp)

2A 2B 3A 3B 4A 4B

Green = Meets objective

Red = Doesn't meet objective

"Project Purpose and Need":

Replace non-ADA compliant existing spiral ramps with ADA-compliant pathway (5% maximum grade)

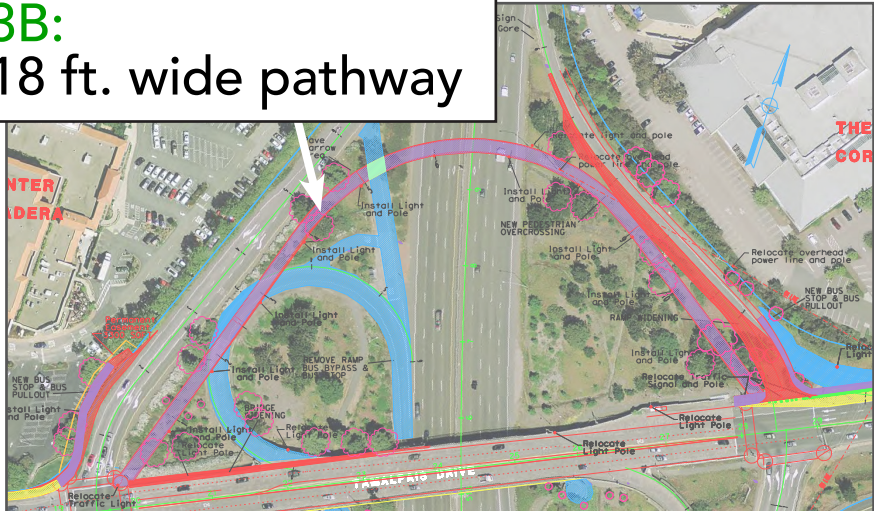
Alternatives: 2A 2B 3A 3B 4A 4B

2A & 2B:
6 to 8 ft. wide walkway



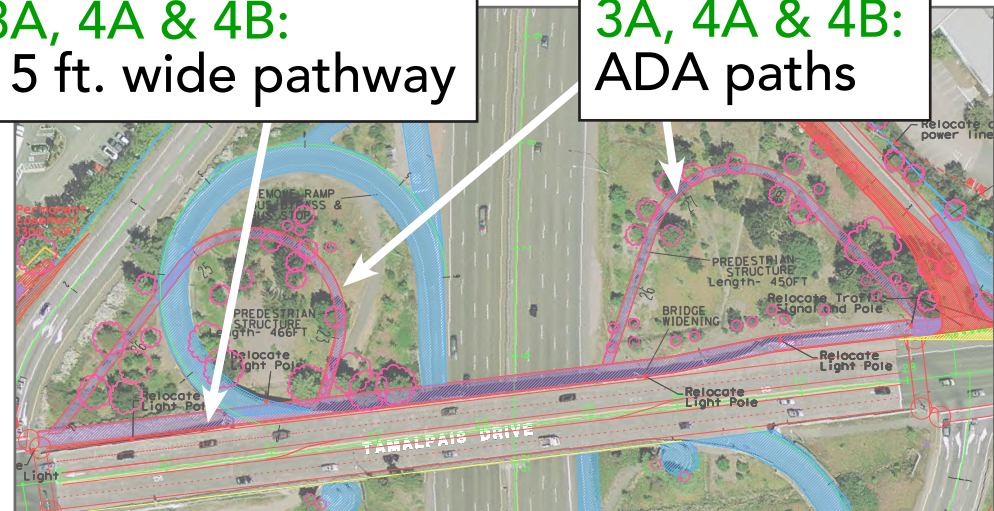
Alternative 2B

3B:
18 ft. wide pathway



Alternative 3B

3A, 4A & 4B:
15 ft. wide pathway



Alternative 4A

3A, 4A & 4B:
ADA paths

“Project Purpose and Need”:
Address seismic deficiencies

Alternatives: 2A 2B 3A 3B 4A 4B

2A, 2B, 3A, 3B, 4A & 4B:
Reconstruct restrainer cables with concrete
seat extensions at key abutments and bents



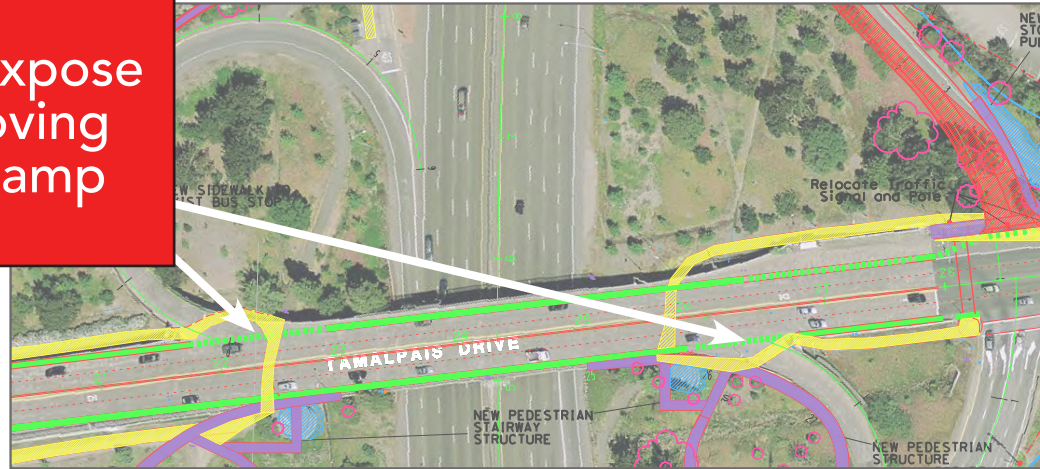
Google Street View

Other Objective:

Provide separated bicycle facility across Highway 101

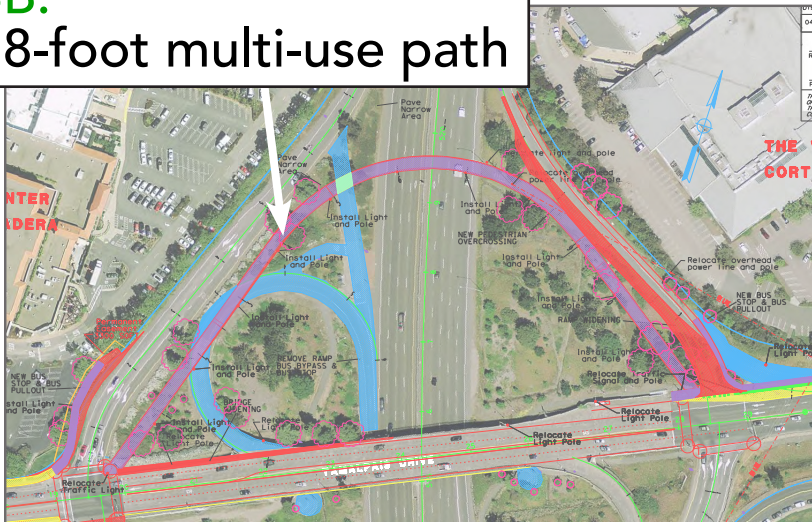
Alternatives: 2A 2B 3A 3B 4A 4B

2A & 2B:
Class 2 bike lanes expose bicyclists to fast-moving vehicles at loop onramp entrances



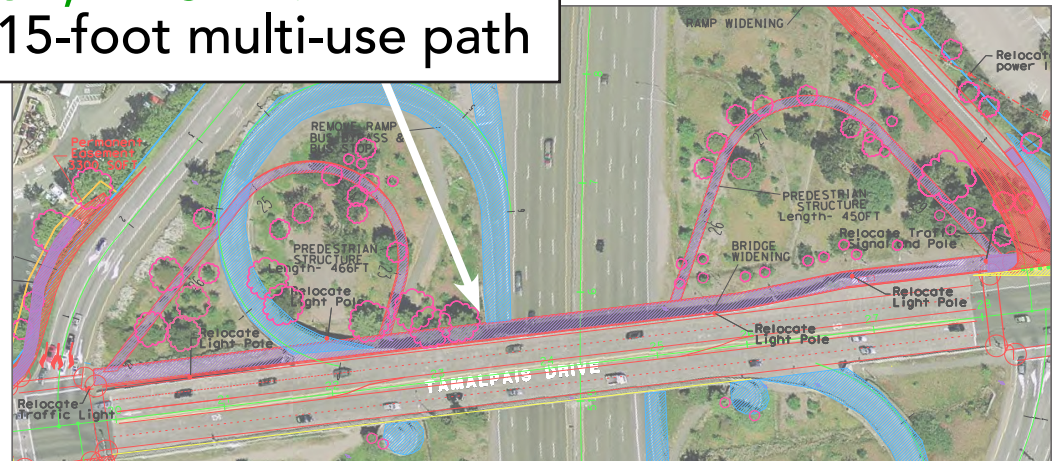
Alternative 2B

3B:
18-foot multi-use path



Alternative 3B

3A, 4A & 4B:
15-foot multi-use path



Alternative 4A

Other Objective: Relocate NB bus stop*

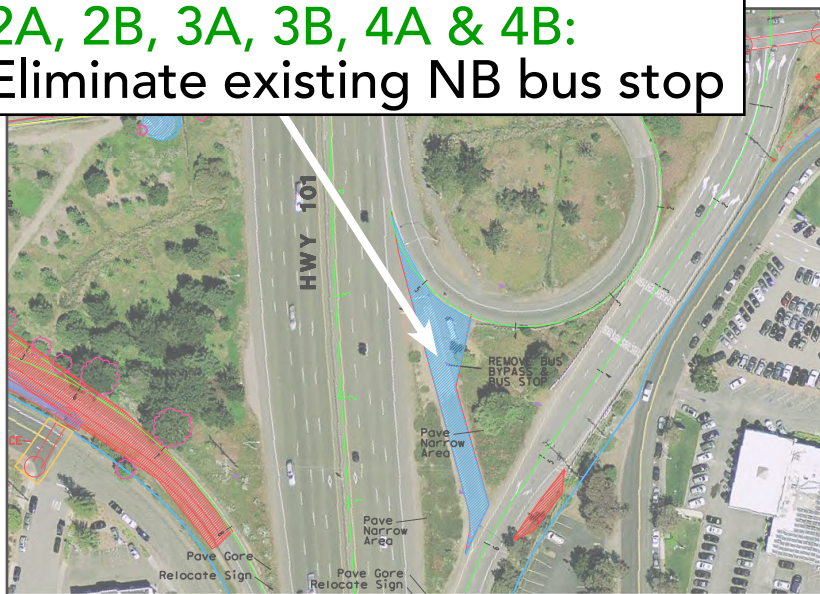
*Some community members have expressed opposition to this change because it requires NB buses to navigate an additional traffic signal, adding to total trip time required of transit riders.

Alternatives: 2A 2B 3A 3B 4A 4B

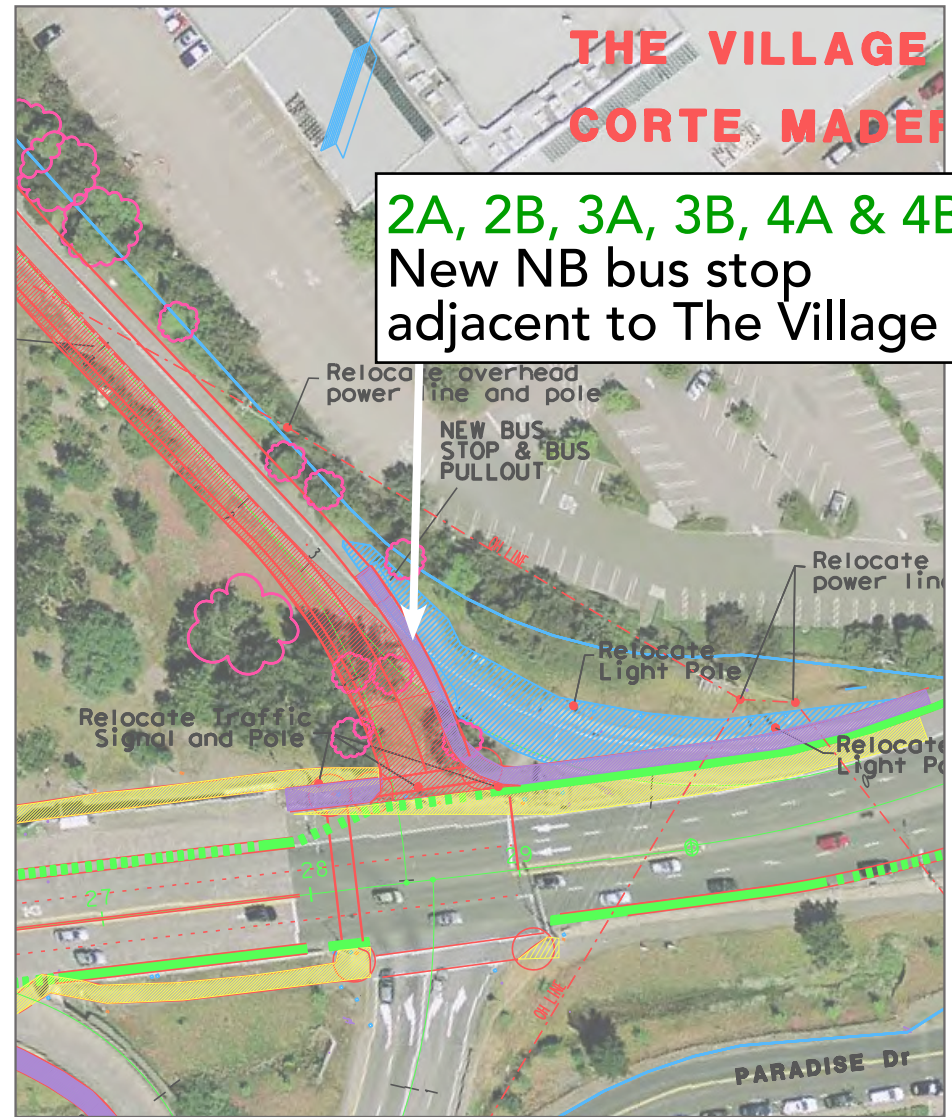


Existing pedestrian route to NB bus stop requires unprotected crossing of NB 101 loop onramp

**2A, 2B, 3A, 3B, 4A & 4B:
Eliminate existing NB bus stop**



Alternative 3B



**2A, 2B, 3A, 3B, 4A & 4B:
New NB bus stop adjacent to The Village**

Alternative 2B

Other Objective: Relocate SB bus stop*

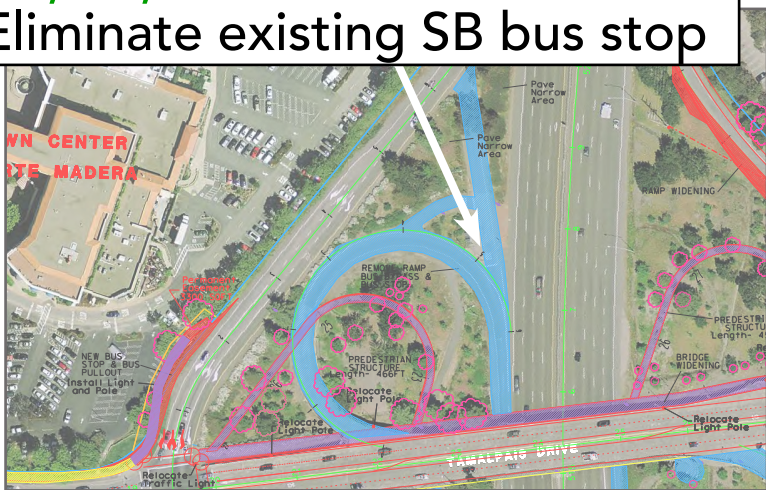
*Some community members have expressed opposition to this change because it requires NB buses to navigate an additional traffic signal, adding to total trip time required of transit riders.

Alternatives: **2A** **2B** **3A** **3B** **4A** **4B**



Existing pedestrian route to SB bus stop requires unprotected crossing of SB 101 loop onramp

3A, 3B, 4A & 4B:
Eliminate existing SB bus stop



Alternative 4A



3A, 3B, 4A & 4B:
New SB bus stop adjacent to The Town Center

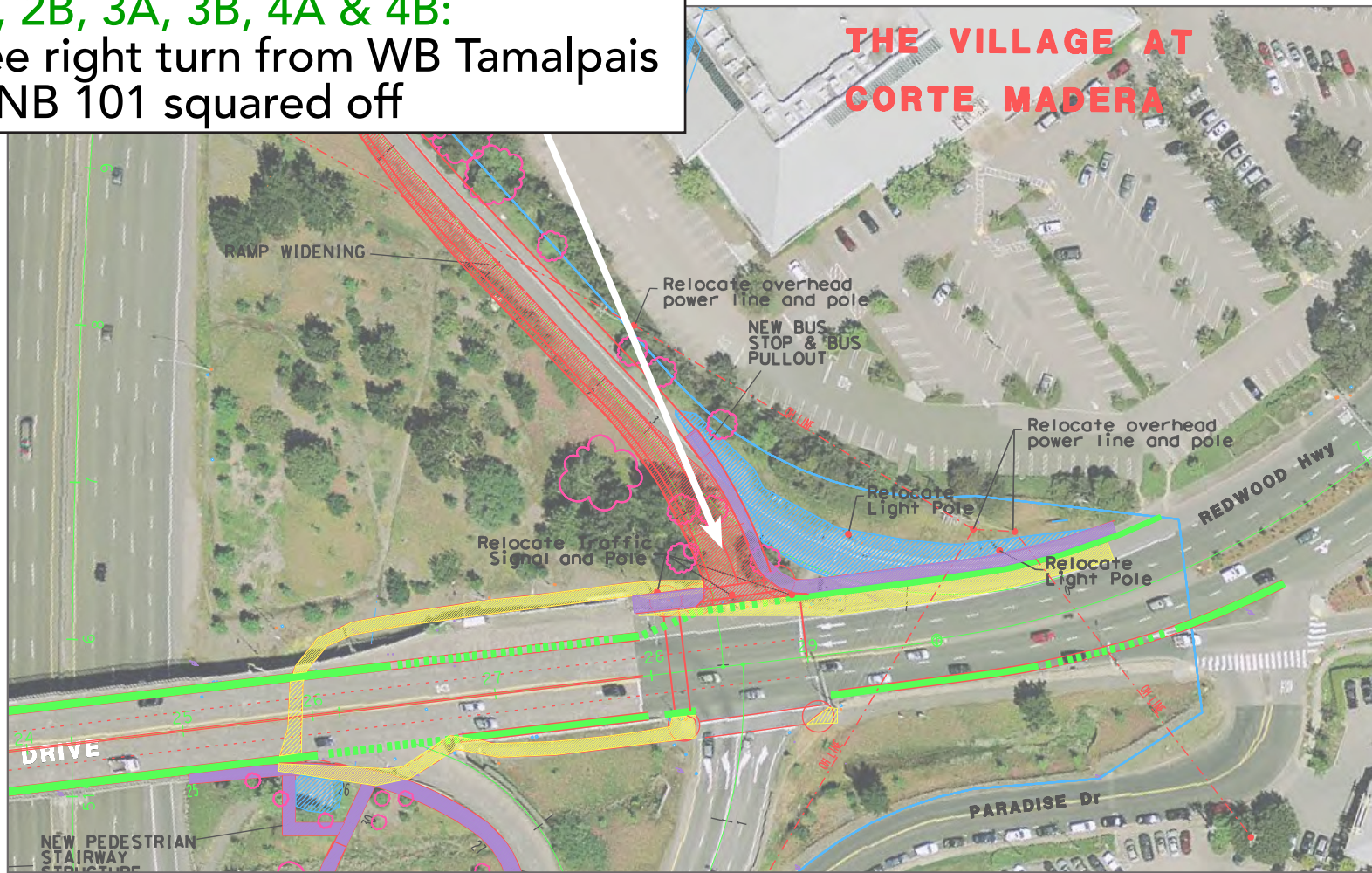
Alternative 4A

Other Objective:

Eliminate WB Tamalpais to NB 101 free right turn

Alternatives: 2A 2B 3A 3B 4A 4B

2A, 2B, 3A, 3B, 4A & 4B:
Free right turn from WB Tamalpais
to NB 101 squared off



Alternative 2B

Other Objective:

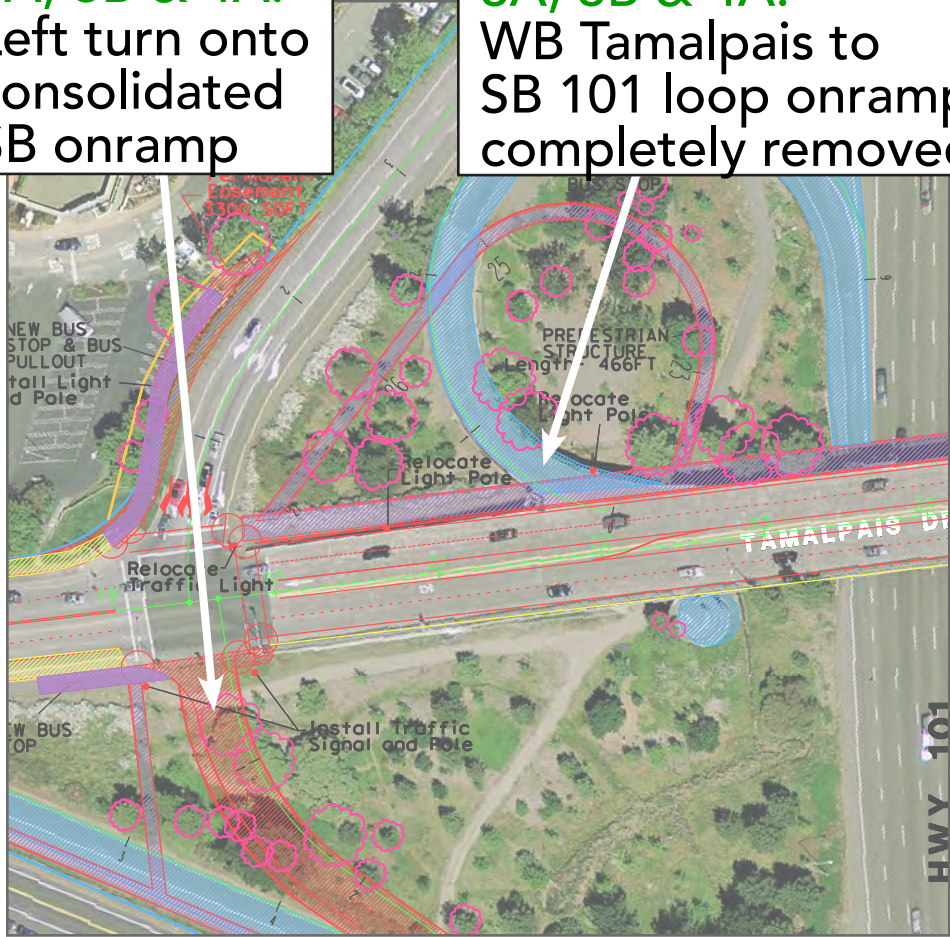
Eliminate WB Tamalpais to SB 101 free right turn

Alternatives: **2A** **2B** **3A** **3B** **4A** **4B**

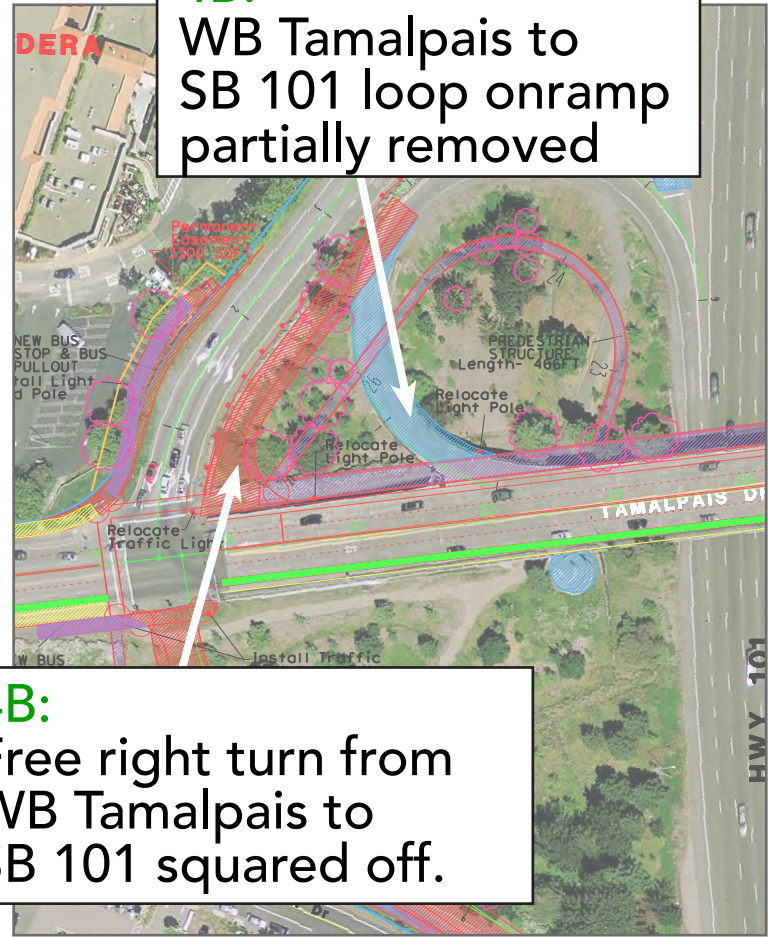
3A, 3B & 4A:
Left turn onto consolidated SB onramp

3A, 3B & 4A:
WB Tamalpais to SB 101 loop onramp completely removed

4B:
WB Tamalpais to SB 101 loop onramp partially removed



Alternative 4A



4B:
Free right turn from WB Tamalpais to SB 101 squared off.

Alternative 4B

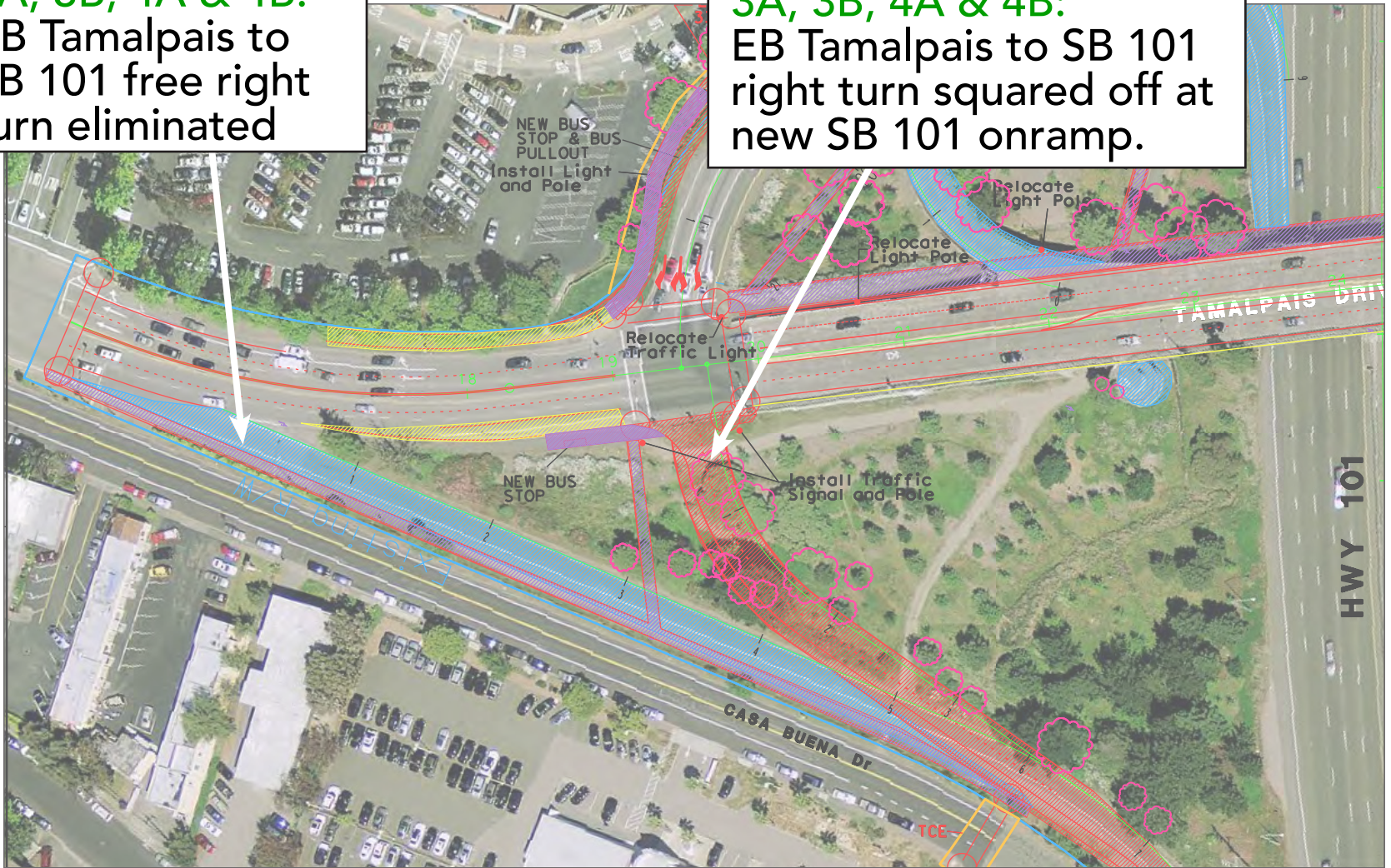
Other Objective:

Eliminate EB Tamalpais to SB 101 free right turn

Alternatives: **2A** **2B** **3A** **3B** **4A** **4B**

3A, 3B, 4A & 4B:
EB Tamalpais to
SB 101 free right
turn eliminated

3A, 3B, 4A & 4B:
EB Tamalpais to SB 101
right turn squared off at
new SB 101 onramp.



Alternative 4A

Other Objective:

Eliminate EB Tamalpais to NB 101 free right turn

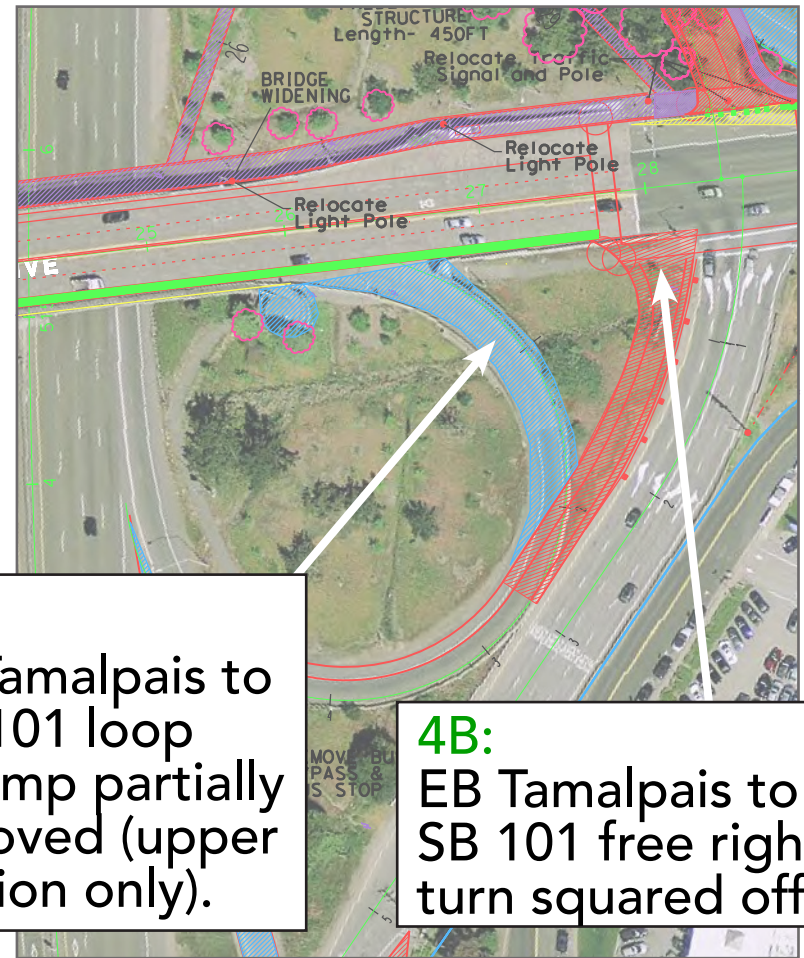
Alternatives: 2A 2B 3A 3B 4A 4B

4A:
EB Tamalpais to NB 101 loop ramp completely removed

4A:
Left turn onto consolidated NB onramp



Alternative 4A



4B:
EB Tamalpais to NB 101 loop onramp partially removed (upper portion only).

4B:
EB Tamalpais to SB 101 free right turn squared off.

Alternative 4B